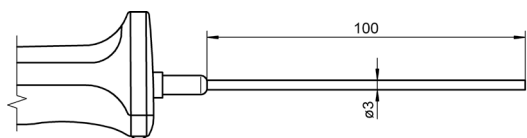


# Temperature

## Pt100 sensor with handle FPA 106 LxxxxH

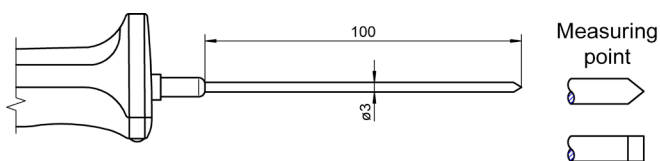


Accuracy: Pt100 film resistor, class B\*  
Measuring tip: Operative range -40...+400 °C  
Sheath element, stainless steel  
 $T_{90}$ : \* 8 s  
Handle: \* 127 mm  
Cable: 1.5 m FEP/silicone

L = 100 mm **Order no. FPA106L0100H**

For immersion measurement

## Pt100 sensor with handle FPA 123 LxxxxH

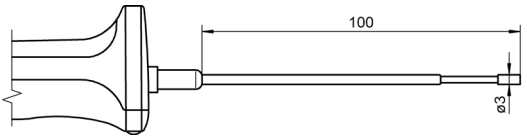


Accuracy: Pt100 film resistor, class B\*  
Measuring tip: Operative range -40...+400 °C  
Penetrating tip  
 $T_{90}$ : \* 8 s  
Handle: \* 127 mm  
Cable: 1.5 m FEP/silicone

L = 100 mm **Order no. FPA123L0100H**

For immersion measurement in plastic and pasty substances

## Pt100 sensor with handle FPA 124 LxxxxH



Accuracy: Pt100 film resistor, class B\*  
Measuring tip: Operative range -40...+300 °C  
Silver rivet, level  
 $T_{90}$ : \* 10 s  
Handle: \* 127 mm  
Cable: 1.5 m FEP/silicone

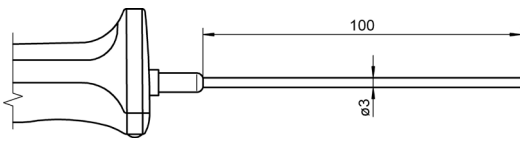
L = 100 mm **Order no. FPA124L0100H**

For surface measurement and immersion measurement

\* Range of validity see page 07.03

DAkkS or factory calibration KT90xx temperature for sensor or measuring chain (sensor + device) (see chapter Calibration certificates)  
DAkkS calibration meets all the requirements regarding test resources laid down in DIN EN ISO/IEC 17025.

## NTC sensor with handle FNA 106 LxxxxH

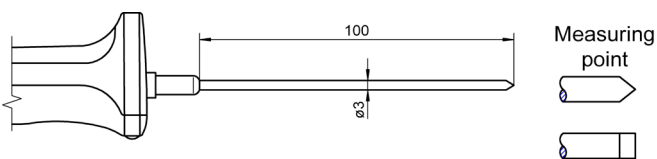


For immersion measurement

Accuracy: NTC, see page 07.04  
 Measuring tip: Operative range -20...+100 °C  
 Sheath element, stainless steel  
 $T_{90}$ : \* 8 s  
 Handle: \* 127 mm  
 Cable: 1.5 m PVC

L = 100 mm **Order no. FNA106L0100H**

## NTC sensor with handle FNA 123 LxxxxH

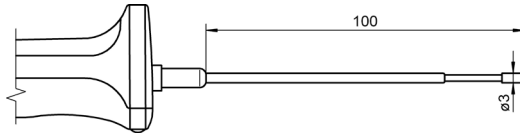


For immersion measurement in plastic and pasty substances

Accuracy: NTC, see page 07.04  
 Measuring tip: Operative range -20...+100 °C  
 Penetrating tip  
 $T_{90}$ : \* 8 s  
 Handle: \* 127 mm  
 Cable: 1.5 m PVC

L = 100 mm **Order no. FNA123L0100H**

## NTC sensor with handle FNA 124 LxxxxH



For surface measurement and immersion measurement

Accuracy: NTC, see page 07.04  
 Measuring tip: Operative range -20...+100 °C  
 Silver rivet, level  
 $T_{90}$ : \* 10 s  
 Handle: \* 127 mm  
 Cable: 1.5 m PVC

L = 100 mm **Order no. FNA124L0100H**

## NTC sensor FNA 305



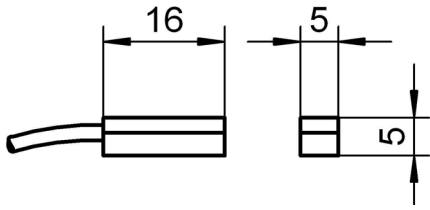
For room air measurement

Accuracy: NTC, see page 07.04  
 Measuring tip: Operative range -10...+60°C  
 (non-condensing), Protective tube  
 in stainless steel  
 diameter = 3.0mm, length = 50mm  
 mounted directly on ALMEMO® connector  
 $T_{90}$ : 8 s

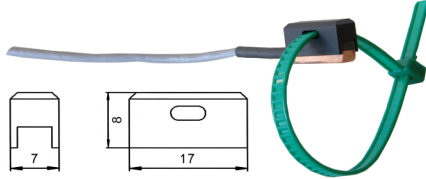
L = 50 mm **Order no. FNA305**  
 (No variants available)

# Temperature

## Pt100 sensor FPA 611 x



For surface measurement



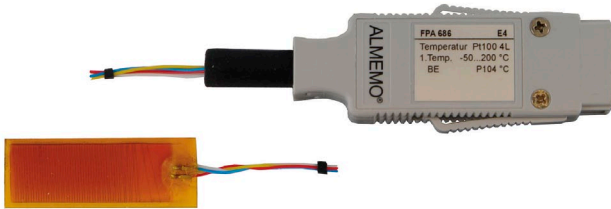
Accuracy: Pt100 film resistor, class B\*  
 Measuring tip: Operative range see below  
 Copper, level  
 Improved thermal transfer thanks to innovative sensor element and new contact technology

$T_{90}^*$ : 20 s  
 Cable: see below

Surface sensor  
 -10...+90°C, Cable PVC, 2 m **Order no. FPA611**  
 -10...+110°C, Cable, PFA, 3m for more demanding mechanical stress ALMEMO® connector, resolution 0.01 K  
**Order no. FPA611S01**

Accessories  
 Fixture for fastening with cable ties **Best-Nr. ZB9611RM**

## Pt100 film sensor FPA 686



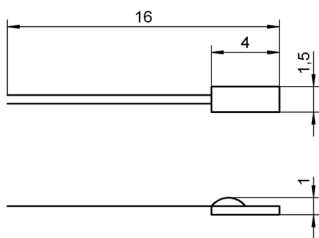
For surface measurement

Accuracy: Pt100 wire-wound, class B\*  
 Messfläche: Operative range -50...+200 °C,  
 temperature-resistant foil,  
 15 x 40 mm, approx. 0.5 mm thick

$T_{90}^*$ : 2 s  
 Cable: Stranded wire PFA, 4-wire twisted

Length 2 m **Order no. FPA686**  
 Length 10 m **Order no. FPA686L10**

## Pt100 ceramic chip sensor element FP 0802



Unprotected sensor element for constructing your own sensors

Accuracy: Pt100 film resistor, class B\*  
 Measuring tip: Operative range -40...+400 °C  
 Ceramic chip sensor

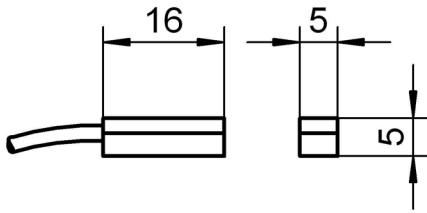
Connection wires: 10 mm, bare

Ceramic chip sensor **Order no. FP0802**

\* Range of validity see page 07.03

DAkkS or factory calibration KT90xx temperature for sensor or measuring chain (sensor + device) (see chapter Calibration certificates)  
 DAkkS calibration meets all the requirements regarding test resources laid down in DIN EN ISO/IEC 17025.

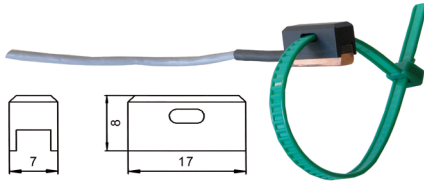
## NTC sensor FNA 611



For surface measurement

Accuracy: NTC, see page 07.04  
 Measuring tip: Operative range -10...+90 °C  
 Copper, level  
 $T_{90}$ : \* 20 s  
 Cable: 2 m PVC

Surface sensor **Order no. FNA611**



Accessories  
 Fixture for fastening  
 with cable ties

**Best-Nr. ZB9611RM**

## NTC sensor FN 0001 K



Unprotected sensor element with cable

Accuracy: NTC, see page 07.04  
 Measuring tip: Sensor element, unprotected  
 Operative range: -20...+100°C  
 Connection wires: appr. 180 mm, fluoropolymer insulation  
 Connecting cable: 2 meters, PVC, thin stranded pick-up  
 wire, Operative range -10 to +90 °C  
 Cable juncture, in shrink-fit

NTC sensor with cable,  
 free ends

**Order no. FN0001K**

Option:

ALMEMO® connector including assembly

Single connectors for 1 sensor

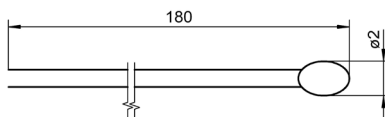
Order no. OT9040AS

Double connector for 2 sensors

Order no. OT9040AS2



## NTC sensor element FN 0001



Unprotected sensor element for constructing your own sensors

Accuracy: NTC, see page 07.04  
 Measuring tip: Operative range -20...+100 °C  
 Sensor

Connection wires 180 mm, fluoropolymer insulation

Sensor

**Order no. FN0001**