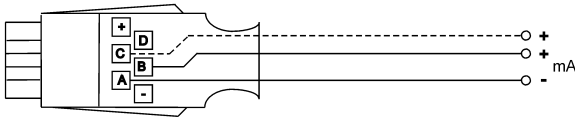


Input connectors and adapter cables

ALMEMO® Connector for DC Current mA



Technical Data

Accuracy shunt:	$\pm 0,1\%$ of measured value
Temperature coefficient:	< 25 ppm/K
Nominal temperature:	$23^{\circ}\text{C} \pm 2$ K

New: Digital ALMEMO® D7 measurement plug, see page 02.09

- Dynamic measuring operations with up to 1000 mops.
- Accuracy independent from the measuring instrument.

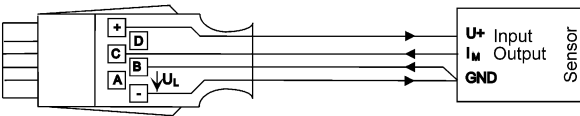
Types:

Model	Meas. Range	Resolution	Order no.
32 mA DC	-32.0 to $+32.0^*$	$1 \mu\text{A}$	ZA9601FS1
4/20 mA DC	0 to 100%	0.01 %	ZA9601FS2
2 mal 32 mA DC	-32.0 to $+32.0^*$	$1 \mu\text{A}$ no electrical isolation	ZA9601FS3
2 mal 4/20 mA DC	0 to 100%	0.01 % no electrical isolation	ZA9601FS4

* Data may vary depending on device; (see data sheet per device)

ALMEMO® Connector for DC mA Differential

for sensors / transmitters, Supply from the ALMEMO® device



Technical Data

Sensor supply	(for voltage see technical data of ALMEMO® device)
Accuracy shunt:	$\pm 0,1\%$ of measured value
Temperature coefficient:	< 25 ppm/K
Nominal temperature:	$23^{\circ}\text{C} \pm 2$ K

New: Digital ALMEMO® D7 measurement plug, see page 02.09

Dynamic measuring operations with up to 1000 mops.

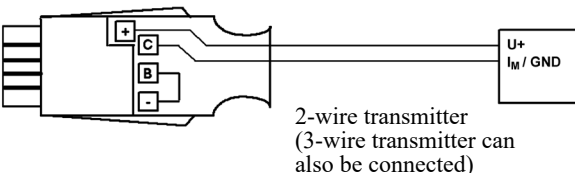
Types:

Model	Meas. Range	Resolution	Order no.
32 mA DC	-32.0 to $+32.0^*$	$1 \mu\text{A}$	ZA9601FS5
4/20 mA DC	0 to 100%	0.01 %	ZA9601FS6

* Data may vary depending on device; (see data sheet per device)

ALMEMO® for DC mA Differential

for sensors / transmitters, Supply 12V from the ALMEMO® device



Technical Data

Sensor supply U_F :	12,2 ... 12,5V (15V/24V on request)
Device voltage U_G :	8 ... 12V
Output current:	100mA at $U_G = 9 \dots 12\text{V}$
Accuracy shunt:	$\pm 0,1\%$ of measured value
Temperature coefficient:	< 25 ppm/K
Nominal temperature:	$23^{\circ}\text{C} \pm 2$ K

New: Digital ALMEMO® D7 measurement plug, see page 02.09

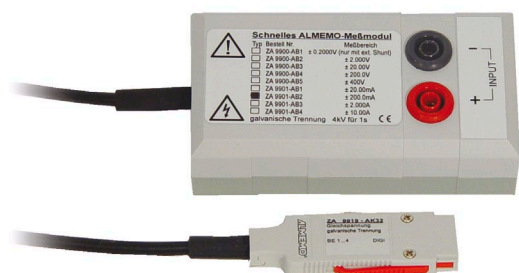
Types:

Model	Meas. Range	Resolution	Order no.
32mA DC	-32.0 to $+32.0^*$	$1 \mu\text{A}$	ZA9601FS5V12
4-20mA DC	0 to 100%	0.01 %	ZA9601FS6V12

* Data may vary depending on device; (see data sheet per device)

Input connectors and adapter cables

ALMEMO® Measuring Module for DC, with Electrical Isolation, 1kV



Technical Data

see Chapter Electrical variables

New: Digital ALMEMO® D7 measurement plug with galvanic isolation up to 50 V, see page 02.09

- Dynamic measuring operations of DC voltages.
- High-speed measuring operations with 1000 mops.
- Alternatively high resolution with up to 200 000 digits.
- Accuracy independent from the measuring instrument.

Types:

Measuring range	Resolution	Overload	Internal resistance	Order no.
±20.00 mA	0.01mA	±0.1 A*	10 Ω	ZA9901AB1
±200.0 mA	0.1mA	±1 A*	1 Ω	ZA9901AB2
±2.000 A	0.001A	±10 A*	0.1 Ω	ZA9901AB3
±10.00 A	0.01A	±20 A*	0.01 Ω	ZA9901AB4
±20,0 A	0,1 A	±30 A*	0.002 Ω	ZA9901AB5

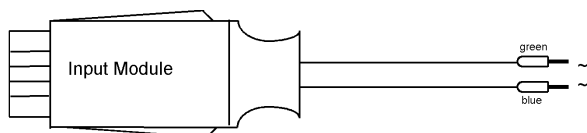
*Without fuse, overload condition only up to 1 minute maximum

DC via external shunt:

±200.0 mV	0.1mV	±40 V	50 kΩ	ZA9900AB1
-----------	-------	-------	-------	-----------

DAkS- or Factory calibration KE90xx, electrically, for digital measuring module, see Chapter Calibration.
DAkS calibration meets all the requirements regarding test resources laid down in DIN EN ISO/IEC 17025.

ALMEMO® Adapter Cable for AC Voltage



Technical Data

Frequency range: 50 Hz to 10 kHz

Accuracy: ± 0.2% of final val. ± 0.5% of meas. val.
(40Hz ... 2kHz sinusoidal),

Crest factor: 3 (add. error 0.7%), 5 (add. error 2.5%)

! NEVER connect voltages higher than 50V!
DANGER!

Types:

Meas. Range	Resolution	Order no.
5 to 260mV _{eff}	0.1 mV	ZA9603AK1
0.05 to 2.6V _{eff}	0.001 V	ZA9603AK2
0.5 to 26.0V _{eff}	0.01 V	ZA9603AK3