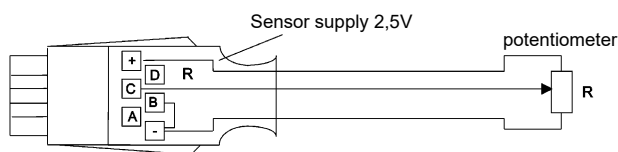


Input connectors and adapter cables

ALMEMO® Connector for Potentiometer pickoffs



Technical Data

Sensor supply:	2.5 V
Temperature coefficient:	< 50 ppm/K

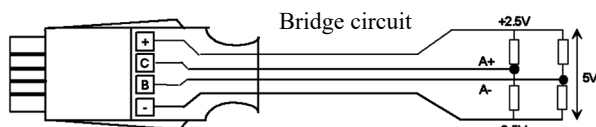
- New:** Digital ALMEMO® D7 measurement plug, see page 02.08
- High-speed measuring operations with 100 mops.
 - Adjusted sensors independent from the measuring instrument.

Types:

Model	Meas. Range	Resolution	Order no.
2.6 V DC Differenz	-2.6 to +2.6* * Data may vary depending on device; (see data sheet per device)	0.1 mV	ZA9025FS3

ALMEMO® Connector for measuring bridges, millivolt / volt differential

With zero-symmetrical voltage supply of ± 2.5 V stabilized from the ALMEMO® device



Technical Data

Sensor supply	
Voltage U_F :	$5V \pm 0.05V$
Temperature coefficient:	<50ppm/°C
Output current:	max. 100mA
Ruhestrom:	approx. 3 mA
Energy saving	So long as the measuring point is not selected, the bridge voltage remains switched OFF.

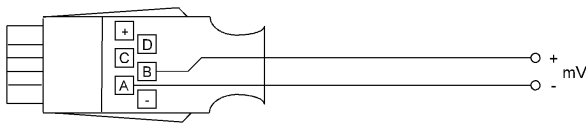
- New:** Digital ALMEMO® D7 measurement plug, see page 02.10
- For measuring bridges (force transducer or similar)
 - High-speed measuring operations with up to 1000 mops
 - Alternatively high resolution with up to 200 000 digits.
 - Accuracy independent from the measuring instrument.

Types:

Model	Meas. Range	Resolution	Order no.
55mV DC	-10.0 to +55.0	1 μ V	ZA9105FS0
26mV DC	-26.0 to +26.0	1 μ V	ZA9105FS1
260mV DC	-260.0 to +260.0	10 μ V	ZA9105FS2
2.6V DC	-2.6 to +2.6* * Data may vary depending on device; (see data sheet per device)	0.1 mV	ZA9105FS3

Input connectors and adapter cables

ALMEMO® Connector for Voltage Millivolt

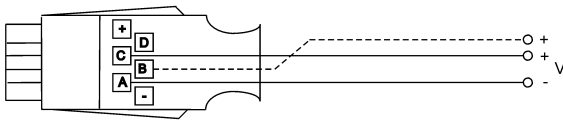


- New:** Digital ALMEMO® D7 measurement plug, see page 02.09
- Dynamic measuring operations of DC voltages.
 - High-speed measuring operations with up to 1000 mops.
 - Alternatively high resolution.
 - Accuracy independent from the measuring instrument.

Types:

Model	Meas. Range	Resolution	Order no.
55 mV DC	-10.0 to +55.0	1 μ V	ZA9000FS0
26 mV DC	-26.0 to +26.0	1 μ V	ZA9000FS1
260 mV DC	-260.0 to +260.0	10 μ V	ZA9000FS2

ALMEMO® Connector for Volt DC



Technical Data

Accuracy divider:	only 5.5 / 26 V connector, $\pm 0.1\%$ of measured value
Temperature coefficient:	<10 ppm/K
Nominal temperature:	23°C ± 2 K

- New:** Digital ALMEMO® D7 measurement plug, see page 02.09
- High-speed measuring operations with 1000 mops.

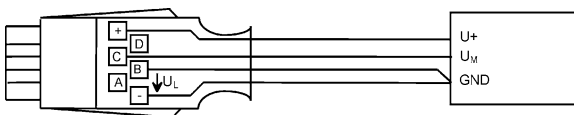
Types:

Model	Meas. Range	Resolution	Order no.
2.6 V DC	-2.6 to +2.6*	0.1 mV	ZA9000FS3
5.5 V DC (divider 100:1)	-1.0 to 5.5	0.1 mV	ZA9602FS4
26 V DC (divider 100:1)	-26.0 to +26.0	1 mV	ZA9602FS
2 mal 26 V DC (2 x divider)	-26.0 to +26.0	1 mV no electrical isolation	ZA9602FS2

* Data may vary depending on device; (see data sheet per device)

ALMEMO® Connector for DC voltage difference millivolts / volt

for sensors / transmitters, Supply from ALMEMO® device



(Connection diagram for connectors with 4 clamps, see next page)

Technical Data

Sensor supply	(for voltage see technical data of ALMEMO® device)
Accuracy divider:	only 26V connector $\pm 0,1\%$ of meas. value
Temperature coefficient:	<10 ppm/K
Nominal temperature:	23°C ± 2 K

- New:** Digital ALMEMO® D7 measurement plug, see page 02.09
- High-speed measuring operations with up to 1000 mops.

Types:

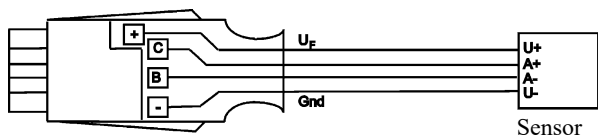
Model	Meas. Range	Resolution	Order no.
55 mV DC	-10.0 to +55.0	1 μ V	ZA9000FS0D
26 mV DC	-26.0 to +26.0	1 μ V	ZA9000FS1D
260 mV DC	-260.0 to +260.0	10 μ V	ZA9000FS2D
2.6 V DC	-2.6 to +2.6*	0.1 mV	ZA9000FS3D
26 V DC (divider 100:1)	-26.0 to +26.0	1 mV	ZA9602FS3

* Data may vary depending on device; (see data sheet per device)

Input connectors and adapter cables

ALMEMO® Connector for DC Millivolt / Volt Differential

for sensors / transmitters, Supply : 12 V from the ALMEMO® device



Technical Data

Sensor supply U_F :	12.2 ... 12.5V (15V/24V on request)
Device voltage U_G :	8 ... 12 V
Output current:	100mA at $U_G = 9 ... 12V$
Accuracy divider:	only 26V connector $\pm 0,1\%$ of meas. value Temperature coefficient: < 10 ppm/K Nominal temperature: $23^\circ\text{C} \pm 2$ K

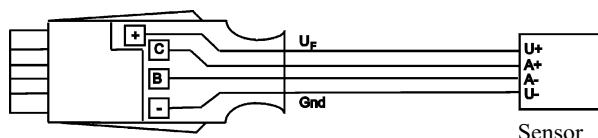
New: Digital ALMEMO® D7 measurement plug, see page 02.09
• High-speed measuring operations with up to 1000 mops.

Types:

Model	Meas. Range	Resolution	Order no.
55mV DC	-10.0 to +55.0	1 μV	ZA9600FS0V12
26mV DC	-26.0 to +26.0	1 μV	ZA9600FS1V12
260mV DC	-260.0 to +260.0	10 μV	ZA9600FS2V12
2.6V DC	-2.6 to +2.6*	0.1 mV	ZA9600FS3V12
26V DC (divider 100:1)	-26.0 to +26.0	1 mV	ZA9602FS3V12

* Data may vary depending on device; (see data sheet per device).

for sensors / transmitters, Supply : 5 V from the ALMEMO® device



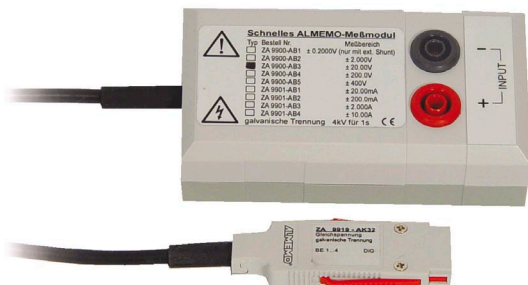
Technical Data

Sensor supply U_F :	5 V $\pm 2\%$ (max.)
Device voltage U_G :	8 ... 12 V
Output current:	50 mA at $U_G = 9 ... 12V$
Accuracy divider:	$\pm 0,1\%$ v. Mw. Temperature coefficient: < 10 ppm/K Nominal temperature: $23^\circ\text{C} \pm 2$ K

Types:

Model	Meas. Range	Resolution	Order no.
5.5 V DC (divider 100:1)	-1.0 to 5.5	0.1 mV	ZA9602FS5V05

ALMEMO® Measuring Module for DC Voltage, with Electrical Isolation, 1kV



Technical Data

see Chapter Electrical variables

New: Digital ALMEMO® D7 measurement plug with galvanic isolation up to 50 V, see page 02.09
• Dynamic measuring operations of DC voltages.
• High-speed measuring operations with 1000 mops.
• Alternatively high resolution with up to 200 000 digits.
• Accuracy independent from the measuring instrument.

Types:

Measuring range	Resolution	Overload	Internal resistance	Order no.
± 2.000 V	0.001V	± 400 V	800 k Ω	ZA9900AB2
± 20.00 V	0.01V	± 500 V	1 M Ω	ZA9900AB3
± 200.0 V	0.1V	± 500 V	1 M Ω	ZA9900AB4
± 400 V	1V	± 1000 V	4 M Ω	ZA9900AB5

DAKs- or Factory calibration KE90xx, electrically, for digital measuring module, see Chapter Calibration.
DAKs calibration meets all the requirements regarding test resources laid down in DIN EN ISO/IEC 17025.